

Infographic

A novel, non pathogenic bacterial species of genus *Klebsiella*, named after India

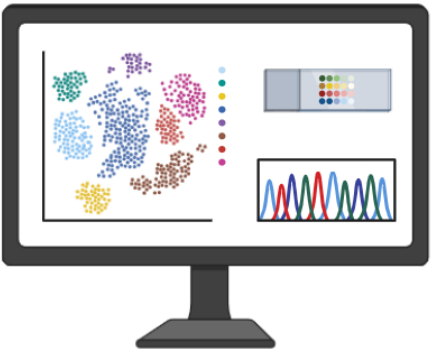


Klebsiella indica (MCC 2901)

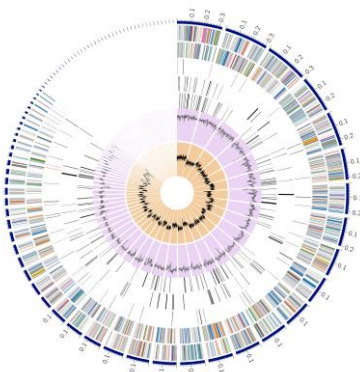


Isolated from outer surface of tomato

- Genome accession number – VCHQ00000000
- Genome Size – 5,244,638 base pair
- Genes – 5,088



Genome sequence analysis



Reference genome sequence

- This bacteria can have beneficial application in agriculture.



Access Genome

Quality of Genome Assembly and Annotation

Klebsiella indica (MCC 2901)

Reference genome accession number VCHQ00000000

| Table 1. Assembly Details | |
|---------------------------|--------------|
| Contigs | 86 |
| GC Content | 53.53 |
| Plasmids | 0 |
| Contig L50 | 11 |
| Genome Length | 5,244,638 bp |
| Contig N50 | 191,451 |

| Table 2. Annotated Genome Features | |
|------------------------------------|-------|
| CDS | 5,088 |
| tRNA | 86 |
| Repeat Regions | 61 |
| rRNA | 33 |
| Partial CDS | 0 |